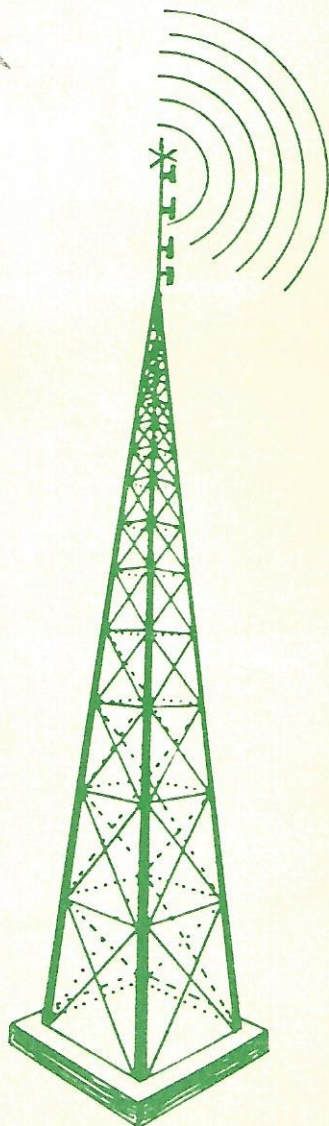


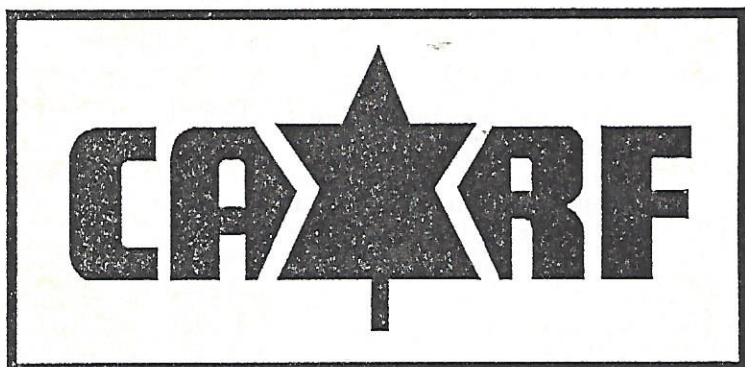


Canadian Amateur  
Radio Federation

DIRECTORY  
of  
CANADIAN  
REPEATERS



\$3.00



REPEATER DIRECTORY

REPertoire DES REPETITRICES

JANUARY 1990

JANVIER 1990

This Repeater Directory is published annually by C.A.R.F. Inc., which also produces study guides for Amateur Radio Operators examinations, a Call Sign and Address book of all Canadian licensed Amateur Stations, and other reference material.

A membership in C.A.R.F. entitles members to a subscription to The Canadian Amateur radio magazine, issued eleven times per year, and use of the free outgoing QSL service provided by the C.A.R.F. National QSL Bureau.

Write for details to the address below or telephone  
(613) 545-9100, 08:30 to 16:00 EST, Monday to Friday.

CANADIAN AMATEUR RADIO FEDERATION  
FEDERATION DES RADIOAMATEURS DU CANADA  
P.O. BOX 356 / B.P. 356  
KINGSTON,  
ONTARIO,  
CANADA.  
K7L 4W2

---

REPEATER DIRECTORY

REPETOIRE DES REPETITRICES

1990

Compiled by  
Compile par

Andrew Wemyss VE3NEX  
Pierre Mainville VE3LPM

Programming by  
Programme par

Francis Salter VE3MGY

Location Emplacement	Call Sign Lettre d'appel	Input Entree	Output Sortie	Set Set	ST TY	R P
<b>Alberta-Alberta</b>						
Alex	VE6PAT	147.810	147.210	+		L
Andrew	VE6JET	146.070	146.670	-	A	
Athabasca	VE6QX	146.130	146.730	-		
Banff	VE6BNF	147.750	147.150	+		
Beaverlodge	VE6XN	146.250	146.850	-		MR
Brooks	VE6EID	147.720	147.120	+		
Calgary	VE6ARI	147.960	147.360	+	B	
Calgary	VE6ARI	443.250	448.250	-		
Calgary	VE6AUY	146.460	147.060	-	A	MR
Calgary	VE6MX	146.040	146.640	-		
Calgary	VE6MX	146.115	146.715	-	A	
Calgary	VE6MX	146.130	146.730	-		LR
Calgary	VE6NRC	146.160	146.760	-		
Calgary	VE6NRC	449.400	444.400	+	A	
Calgary	VE6OIL	146.010	146.610	-		MR
Calgary	VE6RPT	146.340	146.940	-		LMR
Calgary	VE6RYC	146.250	146.850	-		
Calgary	VE6RYC	449.000	444.000	+		
Calgary	VE6SPR	147.690	147.090	+		
Calgary	VE6TPA	147.840	147.240	+	A	
Calgary	VE6TWO	147.990	147.390	+	L	
Calgary	VE6TWO	448.150	443.150	+	A	
Camrose	VE6WW	146.160	146.760	-		SR
Carbon	VE6RCB	146.115	146.715	-		
Claresholm	VE6ROT	146.190	146.790	-		LR
Clive	VE6GAS	144.830	145.430	-		
Cold Lake	VE6OC	146.460	147.060	-		
Coleman	VE6ONE	147.630	147.030	+		
Edmonton	VE3ETR	146.250	146.850	-	A	
Edmonton	VE6EAR	146.250	146.850	-	A	MR
Edmonton	VE6ETH	449.975	444.975	+		
Edmonton	VE6HM	146.460	147.060	-	A	
Edmonton	VE6KM	449.000	444.000	+		
Edmonton	VE6MR	146.340	146.940	-	T	
Edmonton	VE6QCR	146.040	146.640	-		
Fort McMurray	VE6OLD	146.160	146.760	-	A	
Fort McMurray	VE6TRC	147.600	147.000	+	L	
Fort Saskatchewan	VE6FSR	147.870	147.270	+		SR
Grande Prairie	VE6LGL	146.960	146.360	+		
Grande Prairie	VE6OL	146.460	147.060	-		LR
Hanna	VE6FUN	146.220	146.820	-		L62
High River	VE6CQM	147.600	147.000	+	A	SR
Hinton	VE6YAR	146.160	146.760	-		
Lethbridge	VE6CAM	146.280	146.880	-		MR
Lethbridge	VE6TRE	147.750	147.150	+		
Medicine Hat	VE6HAT	146.460	147.060	-		MR
Medicine Hat	VE6HHO	146.250	146.850	-		
Milk River	VE6BRC	146.160	146.760	-	L	
Oyen	VE6CNK	146.340	146.940	-		MR
Peace River	VE6PRR	146.190	146.790	-		MR
Pigeon Lake	VE6SS	146.280	146.880	-		LR
Red Deer	VE6KLM	223.200	224.800	-	A	
Red Deer	VE6QE	146.400	147.000	-		LR
Red Deer	VE6RCQ	147.780	147.180	+	A	
Rocky Mountain House	VE6VHF	146.310	146.910	-		LR
St. Paul	VE6SB	146.070	146.670	-	A	SR

Location Emplacement	Call Sign Lettre d'appel	Input Entree	Output Sortie	Set Set	ST TY	R P
Sylvan Lake	VE6TTY	146.100	146.700	-		TTY
Warner	VE6BBR	146.070	146.670	-		MR
Whitecourt	VE6PP	146.220	146.820	-		LR
Willingdon	VE6RJK	146.190	146.790	-		
Wimborne (Innisfail)	VE6BT	146.370	146.970	-		LR

### British Columbia-Colombie Britanique

100 Mile House	VE7RKM	146.220	146.820	-		
Barkley Sound	VE7RWC	144.730	145.330	-		
Bowen Island	VE7RBI	146.120	146.720	-		
Bridge River	VE7IF	147.940	147.340	+		
Bridge River	VE7RBR	147.900	147.300	+		
Burnaby	VE7BYL	448.150	443.150	+		
Burnaby	VE7ROB	147.960	147.360	+		
Burnaby	VE7RTV	434.600	1278.750	-	V	
Burnaby (East Vancouver)	VE7FVR	147.660	147.060	+	A	L71
Burnaby Mountain	VE7RCH	147.640	147.040	+		
Burnaby(Burnaby Mountain)	VE7RBY	144.750	145.350	-		
Campbell River	VE7RCR	146.360	146.960	-		
Cassiar	VE7RWT	146.340	146.940	-		
Chetwynd	VE7ATY	146.310	146.910	-	A	
Chilliwack	VE7ELK	146.400	147.000	-		
Chilliwack	VE7RYY	144.710	145.310	-		
Chilliwack (Vedder Mtn.)	VE7RCK	147.700	147.100	+		
Clearwater	VE7RWG	146.320	146.920	-		
Courtenay(Mt. Washington)	VE7RCV	146.310	146.910	-		
Cranbrook (East Kootenay)	VE7CAP	146.340	146.940	-		80
Creston	VE7RCA	146.200	146.800	-		
Dawson Creek	VE7RMS	146.060	146.660	-	A	MR
Dawson Creek (Bear Mtn.)	VE7RDC	146.340	146.940	-		
Fort Fraser	VE7RFF	147.630	147.030	+		
Fort Nelson	VE7RFN	146.340	146.940	-		
Fort St. John	VE7RSJ	146.280	146.880	-	A	
Fraser Canyon	VE7HGR	147.660	147.060	+	L	
Grand Forks	VE7RGF	146.060	146.660	-		
Haney (Maple Ridge)	VE7RMR	146.200	146.800	-	A	
Haney (Maple Ridge)	VE7RMR	448.625	443.625	+		
Houston	VE7RHN	147.660	147.060	+		
Kamloops	VE7RLO	146.360	146.960	-		
Kamloops (Dufferin Mtn.)	VE7KAR	146.340	146.940	-	A	
Kamloops (Gunstone Mtn.)	VE7RKA	146.250	146.850	-	L	
Kelowna	VE7OGO	146.120	146.720	-		
Kelowna	VE7RIT	147.800	147.200	+		
Kelowna (Ok Mountain)	VE7ROK	146.220	146.820	-	A	
Kimberly	VE7REK	145.190	28.600	*		
Langley	VE7RLY	147.980	147.380	+		
Lone Butte Rock	VE7LBR	147.660	147.060	+		
Manning Park	VE7MPR	147.660	147.060	+		L71
McBride	VE7RMB	146.160	146.760	-		
Mount Seymour	VE7PRT	1271.940	1291.940	-		
Nanaimo	VE7ISC	146.040	146.640	-		
Nanaimo	VE7RNA	144.830	145.430	-		A71
Nelson (Crawford Bay)	VE7BTU	146.460	147.060	-		
Nelson (Slocan Ridge)	VE7RCT	146.040	146.640	-		
Newcastle Ridge	VE7RNC	146.080	146.680	-	B	L71
Penticton	VE7BEE	52.150	53.150	-		
Penticton	VE7ROC	146.400	147.000	-		

Location Emplacement	Call Sign Lettre d'appel	Input Entree	Output Sortie	Set Set	ST TY	R P
Penticton	VE7RPC	147.720	147.120	+	A	
Penticton (Apex Mountain)	VE7OKN	146.320	146.920	-		
Penticton (Mt. Kobau)	VE7REE	146.340	146.940	-		
Pink Mountain	VE7RPI	146.400	147.000	-	A	
Port Alberni	VE7RAC	147.840	147.240	+	B	L71
Port Alberni	VE7RPA	147.750	147.150	+	AE	
Port Alberni	VE7RTE	449.750	444.750	+		
Port Hardy (Shelly Mtn.)	VE7RNI	146.340	146.940	-	A	L71
Port McNeill	VE7RNZ	144.890	145.490	-		
Port Moody	VE7ESR	144.570	145.170	-		L72
Prince George (Pilot Mtn)	VE7AFG	146.340	146.940	-	AE	160
Prince George (Tabor Mtn)	VE7RPG	146.280	146.880	-		
Prince Rupert	VE7RPR	222.980	224.580	-		
Prince Rupert (Mt. Hayes)	VE7RPR	146.280	146.880	-	A	
Quesnel (Dragon Mtn.)	VE7RQL	146.460	147.060	-		
Richmond	VE7RMD	147.740	147.140	+		
Richmond	VE7RMD	448.750	443.750	+		
Salmon Arm	VE7RNH	146.160	146.760	-		
Salmon Arm	VE7RTS	146.080	144.680	+	R	
Salt Spring Island	VE7RSI	147.920	147.320	+		
Saturna Is. (Victoria)	VE7RVC	146.080	146.680	-		L71
Sicamous	VE7RSA	144.550	145.150	-		
Smithers	VE7RBH	146.280	146.880	-		
Smithers	VE7RHD	146.340	146.940	-		
Sorrento	VE7RAM	146.040	146.640	-	A	
Surrey	VE7RSE	147.940	147.340	+	P	
Terrace	VE7RDD	146.340	146.940	-	E	
Terrace	VE7RDM	146.460	147.060	-		
Terrace (Copper Mtn.)	VE7RTK	146.250	146.850	-		
Trail	VE7RBV	147.930	147.330	+	A	
Trail (Red Mountain)	VE7CAQ	146.240	146.840	-		
Valemount	VE7YCR	146.400	147.000	-		
Vancouver	VE7AYT	447.975	442.975	+		
Vancouver	VE7BHY	448.900	443.900	+		
Vancouver	VE7RAP	449.975	444.975	+		
Vancouver	VE7RDJ	448.725	443.725	+		
Vancouver	VE7ROB	52.110	53.110	-		
Vancouver	VE7RPT	448.525	443.525	+		
Vancouver	VE7RUC	434.600	1245.000	-	V	
Vancouver	VE7RUC	434.600	1245.000	-		
Vancouver	VE7UHF	448.800	443.800	+		
Vancouver	VE7URG	449.000	444.000	+		
Vancouver	VE7VCH	144.890	145.490	-		
Vancouver (Hollyburn Rds)	VE7VAN	147.720	147.120	+		
Vancouver (Mt. Seymor)	VE7RAG	147.620	147.020	+		
Vancouver (Mt. Seymor)	VE7RBC	146.120	146.720	-	T	
Vancouver (Mt. Seymor)	VE7RPT	146.340	146.940	-	A	
Vancouver (Mt. Seymor)	VE7RPT	222.700	224.300	+		
Vancouver (Mt. Seymor)	VE7WRS	147.860	147.260	+	D	
Vancouver (UBC)	VE7RHS	144.670	145.270	-		
Vancouver North	VE7BYL	223.200	224.800	-		
Vancouver North	VE7GTC	447.325	442.325	+		
Vancouver North	VE7RDX	147.900	147.300	+		
Vancouver North	VE7RTM	449.925	444.925	+	D	
Vancouver North	VE7RTY	144.610	145.210	-	R	
Vancouver North	VE7TOK	144.850	145.450	-		
Vancouver north	VE7RNV	222.600	224.200	-		
Vanderhoof	VE7RSM	146.200	146.800	-		

Location Emplacement	Call Sign Lettre d'appel	Input Entree	Output Sortie	Set Set	ST TY	R P
Sylvan Lake	VE6TTY	146.100	146.700	-		TTY
Warner	VE6BBR	146.070	146.670	-		MR
Whitecourt	VE6PP	146.220	146.820	-		LR
Willingdon	VE6RJK	146.190	146.790	-		
Wimborne (Innisfail)	VE6BT	146.370	146.970	-		LR

### British Columbia-Colombie Britanique

100 Mile House	VE7RKM	146.220	146.820	-		
Barkley Sound	VE7RWC	144.730	145.330	-		
Bowen Island	VE7REI	146.120	146.720	-		
Bridge River	VE7IF	147.940	147.340	+		
Bridge River	VE7RBR	147.900	147.300	+		
Burnaby	VE7BYL	448.150	443.150	+		
Burnaby	VE7ROB	147.960	147.360	+		
Burnaby	VE7RTV	434.600	1278.750	-	V	
Burnaby (East Vancouver)	VE7FVR	147.660	147.060	+	A	L71
Burnaby Mountain	VE7RCH	147.640	147.040	+		
Burnaby(Burnaby Mountain)	VE7RBY	144.750	145.350	-		
Campbell River	VE7RCR	146.360	146.960	-		
Cassiar	VE7RWT	146.340	146.940	-		
Chetwynd	VE7ATY	146.310	146.910	-	A	
Chilliwack	VE7ELK	146.400	147.000	-		
Chilliwack	VE7RYY	144.710	145.310	-		
Chilliwack (Vedder Mtn.)	VE7RCK	147.700	147.100	+		
Clearwater	VE7RWG	146.320	146.920	-		
Courtenay(Mt. Washington)	VE7RCV	146.310	146.910	-		
Cranbrook (East Kootenay)	VE7CAP	146.340	146.940	-		80
Creston	VE7RCA	146.200	146.800	-		
Dawson Creek	VE7RMS	146.060	146.660	-	A	MR
Dawson Creek (Bear Mtn.)	VE7RDC	146.340	146.940	-		
Fort Fraser	VE7RFF	147.630	147.030	+		
Fort Nelson	VE7RFN	146.340	146.940	-		
Fort St. John	VE7RSJ	146.280	146.880	-	A	
Fraser Canyon	VE7HGR	147.660	147.060	+	L	
Grand Forks	VE7RGF	146.060	146.660	-		
Haney (Maple Ridge)	VE7RMR	146.200	146.800	-	A	
Haney (Maple Ridge)	VE7RMR	448.625	443.625	+		
Houston	VE7RHN	147.660	147.060	+		
Kamloops	VE7RLO	146.360	146.960	-		
Kamloops (Dufferin Mtn.)	VE7KAR	146.340	146.940	-	A	
Kamloops (Gunstone Mtn.)	VE7RKA	146.250	146.850	-	L	
Kelowna	VE7OGO	146.120	146.720	-		
Kelowna	VE7RIT	147.800	147.200	+		
Kelowna (Ok Mountain)	VE7ROK	146.220	146.820	-	A	
Kimberly	VE7REK	145.190	28.600	+		
Langley	VE7RLY	147.980	147.380	+		
Lone Butte Rock	VE7LBR	147.660	147.060	+		
Manning Park	VE7MPR	147.660	147.060	+		L71
McBride	VE7RMB	146.160	146.760	-		
Mount Seymour	VE7PRT	1271.940	1291.940	-		
Nanaimo	VE7ISC	146.040	146.640	-		
Nanaimo	VE7RNA	144.830	145.430	-		A71
Nelson (Crawford Bay)	VE7BTU	146.460	147.060	-		
Nelson (Slocan Ridge)	VE7RCT	146.040	146.640	-		
Newcastle Ridge	VE7RNC	146.080	146.680	-	B	L71
Penticton	VE7BEE	52.150	53.150	-		
Penticton	VE7ROC	146.400	147.000	-		

Location Emplacement	Call Sign Lettre d'appel	Input Entree	Output Sortie	Set Set	ST TY	R P
Penticton	VE7RPC	147.720	147.120	+	A	
Penticton (Apex Mountain)	VE7OKN	146.320	146.920	-		
Penticton (Mt. Kobau)	VE7REE	146.340	146.940	-		
Pink Mountain	VE7RPI	146.400	147.000	-	A	
Port Alberni	VE7RAC	147.840	147.240	+	B	L71
Port Alberni	VE7RPA	147.750	147.150	+	AE	
Port Alberni	VE7RTE	449.750	444.750	+		
Port Hardy (Shelly Mtn.)	VE7RNI	146.340	146.940	-	A	L71
Port McNeill	VE7RNZ	144.890	145.490	-		
Port Moody	VE7ESR	144.570	145.170	-		L72
Prince George (Pilot Mtn)	VE7AFG	146.340	146.940	-	AE	160
Prince George (Tabor Mtn)	VE7RPG	146.280	146.880	-		
Prince Rupert	VE7RPR	222.980	224.580	-		
Prince Rupert (Mt. Hayes)	VE7RPR	146.280	146.880	-	A	
Quesnel (Dragon Mtn.)	VE7RQL	146.460	147.060	-		
Richmond	VE7RMD	147.740	147.140	+		
Richmond	VE7RMD	448.750	443.750	+		
Salmon Arm	VE7RNH	146.160	146.760	-		
Salmon Arm	VE7RTS	146.080	144.680	+	R	
Salt Spring Island	VE7RSI	147.920	147.320	+		
Saturna Is. (Victoria)	VE7RVC	146.080	146.680	-		L71
Sicamous	VE7RSA	144.550	145.150	-		
Smithers	VE7RBH	146.280	146.880	-		
Smithers	VE7RHD	146.340	146.940	-		
Sorrento	VE7RAM	146.040	146.640	-	A	
Surrey	VE7RSE	147.940	147.340	+	P	
Terrace	VE7RDD	146.340	146.940	-	E	
Terrace	VE7RDM	146.460	147.060	-		
Terrace (Copper Mtn.)	VE7RTK	146.250	146.850	-		
Trail	VE7RBV	147.930	147.330	+	A	
Trail (Red Mountain)	VE7CAQ	146.240	146.840	-		
Valemount	VE7YCR	146.400	147.000	-		
Vancouver	VE7AYT	447.975	442.975	+		
Vancouver	VE7BHY	448.900	443.900	+		
Vancouver	VE7RAP	449.975	444.975	+		
Vancouver	VE7RDJ	448.725	443.725	+		
Vancouver	VE7ROB	52.110	53.110	-		
Vancouver	VE7RPT	448.525	443.525	+		
Vancouver	VE7RUC	434.600	1245.000	-	V	
Vancouver	VE7RUC	434.600	1245.000	-		
Vancouver	VE7UHF	448.800	443.800	+		
Vancouver	VE7URG	449.000	444.000	+		
Vancouver	VE7VCH	144.890	145.490	-		
Vancouver (Hollyburn Rds)	VE7VAN	147.720	147.120	+		
Vancouver (Mt. Seymour)	VE7RAG	147.620	147.020	+		
Vancouver (Mt. Seymour)	VE7RBC	146.120	146.720	-	T	
Vancouver (Mt. Seymour)	VE7RPT	146.340	146.940	-	A	
Vancouver (Mt. Seymour)	VE7RPT	222.700	224.300	-		
Vancouver (Mt. Seymour)	VE7WRS	147.860	147.260	+	D	
Vancouver (UBC)	VE7RHS	144.670	145.270	-		
Vancouver North	VE7BYL	223.200	224.800	-		
Vancouver North	VE7GTC	447.325	442.325	+		
Vancouver North	VE7RDX	147.900	147.300	+		
Vancouver North	VE7RTM	449.925	444.925	+	D	
Vancouver North	VE7RTY	144.610	145.210	-	R	
Vancouver North	VE7TOK	144.850	145.450	-		
Vancouver north	VE7RNV	222.600	224.200	-		
Vanderhoof	VE7RSM	146.200	146.800	-		



Location Emplacement	Call Sign Lettre d'appel	Input Entree	Output Set Sortie Set	ST TY	R P
Vernon	VE7RSS	146.280	146.880	-	L
Vernon	VE7RVN	146.460	147.060	-	A
Victoria	VE7BEU	223.300	224.900	-	
Victoria	VE7FCR	448.575	443.575	+	
Victoria	VE7RMT	146.060	146.660	-	L72
Victoria	VE7VIC	449.875	444.875	+	
Victoria (Mt. McDonald)	VE7RSR	144.810	145.410	-	
Victoria (Mt. McDonald)	VE7VIC	146.240	146.840	-	A
Whistler	VE7RDP	144.570	145.170	-	L72
Whistler	VE7RWH	147.660	147.060	+	
Whonnock	VE7DXC	147.880	147.280	+	
Williams Lake	VE7RWL	147.720	147.120	+	A
Williams Lake (Fox Mtn.)	VE7RRB	147.920	147.320	+	

### Manitoba-Manitoba

Altamont	VE4HS	146.280	146.880	-	
Baldy Mountain	VE4BMR	146.430	147.030	-	
Birtle	VE4BVR	147.840	147.240	+	
Brandon	VE4BDN	146.340	146.940	-	
Brandon	VE4TED	146.130	146.730	-	AT
Dauphin	VE4DPN	146.040	146.640	-	A
Flin Flon	VE4FFR	146.340	146.940	-	
Gimli	VE4GIM	146.250	146.850	-	
Hadishville	VE4EMB	147.960	147.360	+	
Killarney	VE4KIL	146.250	146.850	-	
Neepawa	VE4NEP	147.810	147.210	+	L1
Pinawa	VE4PIN	146.340	146.940	-	L2
Selkirk	VE4INT	146.220	146.820	-	L2
Thompson	VE4TPN	146.340	146.940	-	
Winnipeg	VE4AGA	52.760	52.525	+	L
Winnipeg	VE4AGA	147.720	147.120	+	L
Winnipeg	VE4AGA	449.500	444.500	+	L
Winnipeg	VE4CNR	146.160	146.760	-	
Winnipeg	VE4RAG	147.840	147.240	+	
Winnipeg	VE4TEC	147.930	147.330	+	
Winnipeg	VE4TTR	223.340	224.940	-	
Winnipeg	VE4TTR	444.100	449.100	-	
Winnipeg	VE4TWO	147.990	147.390	+	
Winnipeg	VE4UFO	144.810	145.410	-	
Winnipeg	VE4WDX	147.180	147.780	-	
Winnipeg	VE4WNR	145.950	145.350	+	
Winnipeg	VE4WPG	147.990	147.390	+	
Winnipeg	VE4WRS	147.510	147.510	=	
Winnipeg/Starbuck	VE4MAN	146.010	146.610	-	L1

### New Brunswick - Nouveau Brunswick

Bathurst	VE1PL	146.340	146.940	-	
Campbellton	VE1SMR	146.040	146.640	-	
Caraquet/Chatham	VE1BRF	146.160	146.760	-	
Edmonston	VE1EDM	146.280	146.880	-	
Fredericton	VE1BM	147.720	147.120	+	A
Fredericton	VE1GT	146.340	146.940	-	
Fredericton	VE1PD	146.160	146.760	-	
Moncton	VE1HUB	147.870	147.270	+	
Moncton	VE1MTN	147.690	147.090	+	
Moncton	VE1RPT	146.280	146.880	-	A

Location Emplacement	Call Sign Lettre d'appel	Input Entree	Output Sortie	Set Set	ST TY	R P
Newcastle/Chatham	VE1NCR	147.750	147.150	+		
Perth	VE1BTK	146.220	146.820	-	O	
Perth	VE1KMT	146.460	147.060	-		60
Plaster Rock	VE1PRR	147.870	147.270	+	E	
Pleasant Ridge	VE1BI	144.890	145.490	-	AE	
Sackville	VE1ASC	144.890	145.490	-	AE	
Saint John	VE1EE	147.870	147.270	+		
Saint John	VE1KI	146.220	146.820	-		
Saint John	VE1SIR	147.810	147.210	+	A	L12LOC
Sussex	VE1SMT	146.010	146.610	-		
Woodstock	VE1EMT	146.370	146.970	-	A	

### Newfoundland /Labrador-Terre-Neuve/Labrador

Argentia	VO1ARG	146.220	146.820	-	A	MR
Birchy Lake	VO1BLR	146.040	146.640	-		LR
Corner Brook	VO1MO	146.340	146.940	-	A	SR
Gander	VO1AV	146.280	146.880	-	A	MR
Grand Falls	VO1JY	146.160	146.760	-	A	
Holyrood	VO1GT	146.340	146.940	-	A	MR
Labrador City	VO2AD	146.340	146.940	-	AE	
Marystown	VO1MST	146.250	146.850	-	A	LOC
Shoal Harbour	VO1SHR	146.060	146.660	-	A	MR
St. Johns	VO1EN	146.460	147.060	-	A	SR
Terra Nova Park	VO1TNP	146.100	146.700	-	B	SR

### Nova Scotia-Nouvelle Ecosse

Bedford	VE1NZ	146.250	146.850	-		
Big Harbour	VE1BVH	147.720	147.120	+	A	
Blockhouse	VE1LCA	147.840	147.240	+		
Bridgetown	VE1BO	146.460	147.060	-	E	
Dartmouth	VE1DAR	147.750	147.150	+		
Dartmouth	VE1MAR	147.870	147.270	+	A	
Digby	VE1AAR	146.190	146.790	-		
Gore	VE1OM	146.040	146.640	-		
Granite Village	VE1BBY	147.960	147.360	+	MR	
Greenwood	VE1WN	147.870	147.270	+		
Halifax	VE1CBC	146.340	146.940	-		
Halifax	VE1MAP	444.400	449.400	+		
Halifax (Airport)	VE1CDN	146.370	146.970	-		
Halifax (Airport)	VE1CDN	444.000	449.000	+		
Hammonds Plains	VE1DXI	146.085	146.685	-		
Kiltarlity Mount	VE1KIL	146.130	146.730	-		LOC
Liverpool	VE1VO	147.900	147.300	+	A	
Mt. Blomidon	VE1AEH	147.780	147.180	+		
Mulgrave	VE1RTI	146.220	146.820	-	L	
Musquodoboit Harbour	VE1MHR	146.430	147.030	-		
New Glasgow	VE1HR	146.160	146.760	-		50
Nineveh	VE1NIN	147.690	147.090	+		
North Sydney	VE1CR	147.840	147.240	+	AL	
Rear Boisdale	VE1HAM	146.280	146.880	-	L	
Rear Boisdale	VE1HAM	449.900	444.900	+		
Shelburne	VE1SCR	146.010	146.610	-		
Springhill	VE1SPR	146.400	147.000	-	A	L11
Sydney	VE1AUY	147.840	147.240	+		
Sydney	VE1CBI	146.010	146.610	-	R	
Sydney	VE1SYD	146.340	146.940	-	A	

Location Emplacement	Call Sign Lettre d'appel	Input Entree	Output Sortie	Set Set	ST TY	R P
Vernon	VE7RSS	146.280	146.880	-	L	
Vernon	VE7RVN	146.460	147.060	-	A	
Victoria	VE7BEU	223.300	224.900	-		
Victoria	VE7FCR	448.575	443.575	+		
Victoria	VE7RMT	146.060	146.660	-		L72
Victoria	VE7VIC	449.875	444.875	+		
Victoria (Mt. McDonald)	VE7RSR	144.810	145.410	-		
Victoria (Mt. McDonald)	VE7VIC	146.240	146.840	-	A	
Whistler	VE7RDP	144.570	145.170	-		L72
Whistler	VE7RWH	147.660	147.060	+		
Whonnock	VE7DXC	147.880	147.280	+		
Williams Lake	VE7RWL	147.720	147.120	+	A	
Williams Lake (Fox Mtn.)	VE7RRB	147.920	147.320	+		

### Manitoba-Manitoba

Altamont	VE4HS	146.280	146.880	-		
Baldy Mountain	VE4BMR	146.430	147.030	-		
Birtle	VE4BVR	147.840	147.240	+		
Brandon	VE4BDN	146.340	146.940	-		
Brandon	VE4TED	146.130	146.730	-	AT	
Dauphin	VE4DPN	146.040	146.640	-	A	
Flin Flon	VE4FFR	146.340	146.940	-		
Gimli	VE4GIM	146.250	146.850	-		
Hadishville	VE4EMB	147.960	147.360	+		
Killarney	VE4KIL	146.250	146.850	-		
Neepawa	VE4NEP	147.810	147.210	+		L1
Pinawa	VE4PIN	146.340	146.940	-		L2
Selkirk	VE4INT	146.220	146.820	-		L2
Thompson	VE4TPN	146.340	146.940	-		
Winnipeg	VE4AGA	52.760	52.525	+		L
Winnipeg	VE4AGA	147.720	147.120	+		L
Winnipeg	VE4AGA	449.500	444.500	+		L
Winnipeg	VE4CNR	146.160	146.760	-		
Winnipeg	VE4RAG	147.840	147.240	+		
Winnipeg	VE4TEC	147.930	147.330	+		
Winnipeg	VE4TTR	223.340	224.940	-		
Winnipeg	VE4TTR	444.100	449.100	-		
Winnipeg	VE4TWO	147.990	147.390	+		
Winnipeg	VE4UFO	144.810	145.410	-		
Winnipeg	VE4WDX	147.180	147.780	-		
Winnipeg	VE4WNR	145.950	145.350	+		
Winnipeg	VE4WPG	147.990	147.390	+		
Winnipeg	VE4WRS	147.510	147.510	=		
Winnipeg/Starbuck	VE4MAN	146.010	146.610	-		L1

### New Brunswick - Nouveau Brunswick

Bathurst	VE1PL	146.340	146.940	-		
Campbellton	VE1SMR	146.040	146.640	-		
Caraquet/Chatham	VE1BRF	146.160	146.760	-		
Edmonston	VE1EDM	146.280	146.880	-		
Fredericton	VE1BM	147.720	147.120	+	A	
Fredericton	VE1GT	146.340	146.940	-		
Fredericton	VE1PD	146.160	146.760	-		
Moncton	VE1HUB	147.870	147.270	+		
Moncton	VE1MTN	147.690	147.090	+		
Moncton	VE1RPT	146.280	146.880	-	A	

Location Emplacement	Call Sign Lettre d'appel	Input Entree	Output Sortie	Set Set	ST TY	R P
Newcastle/Chatham	VE1NCR	147.750	147.150	+		
Perth	VE1BTK	146.220	146.820	-	O	
Perth	VE1KMT	146.460	147.060	-		60
Plaster Rock	VE1PRR	147.870	147.270	+	E	
Pleasant Ridge	VE1BI	144.890	145.490	-	AE	
Sackville	VE1ASC	144.890	145.490	-	AE	
Saint John	VE1EE	147.870	147.270	+		
Saint John	VE1KI	146.220	146.820	-		
Saint John	VE1SIR	147.810	147.210	+	A	L12LOC
Sussex	VE1SMT	146.010	146.610	-		
Woodstock	VE1EMT	146.370	146.970	-	A	
<b>Newfoundland /Labrador-Terre-Neuve/Labrador</b>						
Argentia	VO1ARG	146.220	146.820	-	A	MR
Birchy Lake	VO1BLR	146.040	146.640	-		LR
Corner Brook	VO1MO	146.340	146.940	-	A	SR
Gander	VO1AV	146.280	146.880	-	A	MR
Grand Falls	VO1JY	146.160	146.760	-	A	
Holyrood	VO1GT	146.340	146.940	-	A	MR
Labrador City	VO2AD	146.340	146.940	-	AE	
Marystown	VO1MST	146.250	146.850	-	A	LOC
Shoal Harbour	VO1SHR	146.060	146.660	-	A	MR
St. Johns	VO1EN	146.460	147.060	-	A	SR
Terra Nova Park	VO1TNP	146.100	146.700	-	B	SR
<b>Nova Scotia-Nouvelle Ecosse</b>						
Bedford	VE1NZ	146.250	146.850	-		
Big Harbour	VE1BVH	147.720	147.120	+	A	
Blockhouse	VE1LCA	147.840	147.240	+		
Bridgetown	VE1BO	146.460	147.060	-	E	
Dartmouth	VE1DAR	147.750	147.150	+		
Dartmouth	VE1MAR	147.870	147.270	+	A	
Digby	VE1AAR	146.190	146.790	-		
Gore	VE1OM	146.040	146.640	-		
Granite Village	VE1BBY	147.960	147.360	+		MR
Greenwood	VE1WN	147.870	147.270	+		
Halifax	VE1CBC	146.340	146.940	-		
Halifax	VE1MAP	444.400	449.400	+		
Halifax (Airport)	VE1CDN	146.370	146.970	+		
Halifax (Airport)	VE1CDN	444.000	449.000	+		
Hammonds Plains	VE1DXI	146.085	146.685	-		
Kiltarlity Mount	VE1KIL	146.130	146.730	+		LOC
Liverpool	VE1VO	147.900	147.300	+	A	
Mt. Blomidon	VE1AEH	147.780	147.180	+		
Mulgrave	VE1RTI	146.220	146.820	-	L	
Musquodoboit Harbour	VE1MHR	146.430	147.030	-		
New Glasgow	VE1HR	146.160	146.760	-		50
Nineveh	VE1NIN	147.690	147.090	+		
North Sydney	VE1CR	147.840	147.240	+		
Rear Boisdale	VE1HAM	146.280	146.880	-	L	
Rear Boisdale	VE1HAM	449.900	444.900	+		
Shelburne	VE1SCR	146.010	146.610	-		
Springhill	VE1SPR	146.400	147.000	-	A	L11
Sydney	VE1AUY	147.840	147.240	+		
Sydney	VE1CBI	146.010	146.610	-	R	
Sydney	VE1SYD	146.340	146.940	-	A	

Location Emplacement	Call Sign Lettre d'appel	Input Entree	Output Set Sortie Set	ST TY	R P
Truro	VE1TRO	147.810	147.210	+	E
Truro	VE1XK	146.190	146.790	-	E
Truro	VE1ZG	146.310	146.910	-	E
Yarmouth	VE1YAR	146.130	146.730	-	

Ontario-Ontario

Almonte	VE3IHZ	147.870	147.270	+	A
Aurora	VE3YRC	449.225	444.225	+	
Bancroft/Aspley	VE3OCC	146.370	146.970	-	
Bancroft/Essonville	VE3TBF	147.840	147.240	+	L31
Bancroft/Essonville	VE3TBF	223.240	224.840	-	L31H
Barrie	VE3RAG	147.600	147.000	+	
Barrie	VE3RAG	147.765	147.165	+	
Barrie	VE3TTB	144.590	145.190	-	L32
Barrie/Edgar	VE3LSR	146.250	146.850	-	
Barrie/Edgar	VE3LSR	147.990	147.390	+	
Barrie/Edgar	VE3LSR	449.350	444.350	+	
Belleville	VE3BEL	146.430	147.030	-	A 25
Belleville	VE3KBR	146.385	146.985	-	60
Bracebridge	VE3MRT	146.280	146.880	-	A
Brampton	VE3MTC	449.450	444.450	+	
Brampton	VE3PRC	146.280	146.880	-	B
Brampton	VE3PRC	448.550	443.550	+	
Brantford	VE3EJM	144.830	145.430	-	
Brantford	VE3PCK	448.025	443.025	+	
Brantford	VE3TCR	147.750	147.150	+	
Brockville	VE3BAT	146.220	146.820	-	A 80
Burlington	VE3IWL	448.200	443.200	+	
Burlington	VE3RAE	146.295	146.895	-	
Burlington	VE3RSB	147.810	147.210	+	
Burlington	VE3RSB	449.825	444.825	+	
Cambridge	VE3SWR	146.190	146.790	-	MR
Campbellford	VE3KFR	144.790	145.390	-	
Chatham	VE3KCR	147.720	147.120	+	AE
Chatham	VE3KCR	447.200	442.200	+	
Chatham	VE3SOR	144.590	145.190	-	L33
Chatham	VE3WAL	146.385	146.985	-	
Chelmsford	VE3JIQ	146.160	146.760	-	
Cobalt	VE3TAR	146.370	146.970	-	
Coburg	VE3MXR	449.975	444.975	+	
Coburg	VE3RTR	144.550	145.150	-	L32
Coburg	VE3RTR	223.200	224.800	-	
Collingwood	VE3MTR	146.190	146.790	-	AE L32
Combermere	VE3NHB	146.070	146.670	-	
Cornwall	VE3SVC	147.780	147.180	+	
Dryden	VE3DRY	147.840	147.240	+	
Dunnville	VE3HNR	147.675	147.075	+	
Ear Falls / Red Lake	VE3RLD	147.600	147.000	+	E
Elliot Lake	VE3TOP	147.600	147.000	+	
Fort Francis	VE3FHS	146.460	147.060	-	
Fort Francis	VE3RLC	146.220	146.820	-	
Ft. Erie/Ridgeway	VE3NKH	147.765	147.165	+	
Ft. Erie/Wainfleet	VE3BNU	447.500	442.500	+	
Georgetown	VE3OD	147.735	147.135	+	AE
Georgetown	VE3OD	448.425	443.425	+	E
Geraldton	VE3GLC	146.700	147.300	-	
Goderich	VE3GOD	147.630	147.030	+	

Location Emplacement	Call Sign Lettre d'appel	Input Entree	Output Sortie	Set Set	ST TY	R P
Grand Bend	VE3RGB	146.160	146.760	-		
Grand Bend/Hensall	VE3OBC	146.310	146.910	-		
Guelph	VE3ZMG	144.610	145.210	-		
Haliburton	VE3GTS	147.720	147.120	+		
Hamilton	VE3DRW	144.890	145.490	-		
Hamilton	VE3DRW	223.360	224.960	-		
Hamilton	VE3MBR	147.705	147.105	+	A	
Hamilton	VE3NCF	146.160	146.760	-	E	
Hamilton	VE3RDM	449.750	444.750	+		
Hamilton	VE3RDX	449.075	444.075	+		
Hamilton	VE3RFI	448.250	443.250	+		
Hamilton	VE3ZOE	448.075	443.075	+		
Hamilton/Dundas	VE3RBH	449.425	444.425	+		
Hamilton/Dundas	VE3TTL	223.160	224.760	-		
Hamilton/Grimsby	VE3TVI	146.205	146.805	-	L	
Hamilton/Stoney Creek	VE3PDX	147.945	147.345	+		
Hamilton/Vineland	VE3VSC	449.650	444.650	+		
Huntsville/Dwight	VE3MUS	146.220	146.820	-		L31
Iroquois	VE3IRO	145.160	145.760	+		
Kenora	VE3LWR	146.430	147.030	-		
Kenora	VE3YQK	146.310	146.910	-	A	
Kidd Creek	VE3MZW	146.460	147.060	-		
Kingston	VE3KER	146.340	146.940	-	E	
Kingston	VE3KNR	146.190	146.790	-	A	
Kingsville	VE3ZZZ	144.650	145.250	-		
Kirkland Lake	VE3KLR	146.280	146.880	-	O	
Kitchener	VE3RBM	449.875	444.875	+		
Kitchener/Baden	VE3KSR	146.370	146.970	+		
Kitchener/Cambridge	VE3RCK	146.265	146.865	-	790	
Kitchener/Cambridge	VE3RKB	449.975	444.975	+		
Kitchener/Waterloo	VE3SOK	144.730	145.330	-	46 L33	
Kitchener/Waterloo	VE3WFM	147.690	147.090	+		
Leamington	VE3TOM	147.900	147.300	+		
Little Current	VE3RMI	147.280	147.880	-		
London	VE3LON	147.660	147.060	+		
London	VE3MCR	449.575	444.575	+		
London	VE3MGI	144.790	145.390	-	AL MR	
London	VE3MGI	449.800	444.800	+		
London	VE3NMN	448.200	443.200	+		
London	VE3RGM	144.850	145.450	-		
London	VE3SUE	449.400	444.400	+	AL MR	
London	VE3TTT	147.780	147.180	+	AEL MR	
London	VE3TTT	223.180	224.780	-	AEL MR	
London	VE3TTT	447.300	442.300	+		
London/Dorchester	VE3NDT	147.840	147.240	+		
London/Ingersoll	VE3OHR	147.870	147.270	+		
London/Lucan	VE3MCR	147.600	147.000	+		
London/St. Thomas	VE3STR	147.930	147.330	+		
Longlac	VE3LLT	146.460	147.060	-		
Manitick	VE3RIX	144.850	145.450	-		
Mattawa	VE3NFM	144.530	145.130	-	A	
Maynooth	VE3KXB	147.600	147.000	+		
Midland	VE3UGB	146.310	146.910	-		
Midland/Penetanguishene	VE3MGB	147.780	147.180	+		
Midland/Penetanguishene	VE3PEN	147.750	147.150	+	E	
Midland/Penetanguishene	VE3SGB	146.160	146.760	-	L	
Mississauga	VE3NSL	449.025	444.025	+		
Mississauga	VE3RCX	144.830	145.430	-		

Location Emplacement	Call Sign Lettre d'appel	Input Entree	Output Sortie	Set Set	ST TY	R P
Truro	VE1TRO	147.810	147.210	+	E	
Truro	VE1XK	146.190	146.790	-	E	
Truro	VE1ZG	146.310	146.910	-	E	
Yarmouth	VE1YAR	146.130	146.730	-		
<b>Ontario-Ontario</b>						
Almonte	VE3IHZ	147.870	147.270	+	A	
Aurora	VE3YRC	449.225	444.225	+		
Bancroft/Aspley	VE3OCC	146.370	146.970	-		
Bancroft/Essonville	VE3TBF	147.840	147.240	+		L31
Bancroft/Essonville	VE3TBF	223.240	224.840	-		L31H
Barrie	VE3RAG	147.600	147.000	+		
Barrie	VE3RAG	147.765	147.165	+		
Barrie	VE3TTB	144.590	145.190	-		L32
Barrie/Edgar	VE3LSR	146.250	146.850	-		
Barrie/Edgar	VE3LSR	147.990	147.390	+		
Barrie/Edgar	VE3LSR	449.350	444.350	+		
Belleville	VE3BEL	146.430	147.030	-	A	25
Belleville	VE3KBR	146.385	146.985	-		60
Bracebridge	VE3MRT	146.280	146.880	-	A	
Brampton	VE3MTC	449.450	444.450	+		
Brampton	VE3PRC	146.280	146.880	-	B	
Brampton	VE3PRC	448.550	443.550	+		
Brantford	VE3EJM	144.830	145.430	-		
Brantford	VE3PCK	448.025	443.025	+		
Brantford	VE3TCR	147.750	147.150	+		
Brockville	VE3BAT	146.220	146.820	-	A	80
Burlington	VE3IWL	448.200	443.200	+		
Burlington	VE3RAE	146.295	146.895	-		
Burlington	VE3RSB	147.810	147.210	+		
Burlington	VE3RSB	449.825	444.825	+		
Cambridge	VE3SWR	146.190	146.790	-		MR
Campbellford	VE3KFR	144.790	145.390	-		
Chatham	VE3KCR	147.720	147.120	+	AE	
Chatham	VE3KCR	447.200	442.200	+		
Chatham	VE3SOR	144.590	145.190	-		L33
Chatham	VE3WAL	146.385	146.985	-		
Chelmsford	VE3JIQ	146.160	146.760	-		
Cobalt	VE3TAR	146.370	146.970	-		
Coburg	VE3MXR	449.975	444.975	+		
Coburg	*VE3RTR	144.550	145.150	-		L32
Coburg	VE3RTR	223.200	224.800	-		
Collingwood	VE3MTR	146.190	146.790	-	AE	L32
Combermere	VE3NHB	146.070	146.670	-		
Cornwall	VE3SVC	147.780	147.180	+		
Dryden	VE3DRY	147.840	147.240	+		
Dunville	VE3HNR	147.675	147.075	+		
Ear Falls / Red Lake	VE3RLD	147.600	147.000	+	E	
Elliot Lake	VE3TOP	147.600	147.000	+		
Fort Francis	VE3FHS	146.460	147.060	-		
Fort Francis	VE3RLC	146.220	146.820	-		
Ft. Erie/Ridgeway	*VE3NKH	147.765	147.165	+		
Ft. Erie/Wainfleet	VE3BNU	447.500	442.500	+		
Georgetown	VE3OD	147.735	147.135	+	AE	
Georgetown	VE3OD	448.425	443.425	+	E	
Geraldton	VE3GLC	146.700	147.300	-		
Goderich	VE3GOD	147.630	147.030	+		

Location Emplacement	Call Sign Lettre d'appel	Input Entree	Output Sortie	Set Set	ST TY	R P
Grand Bend	VE3RGB	146.160	146.760	-		
Grand Bend/Hensall	VE3OBC	146.310	146.910	-		
Guelph	VE3ZMG	144.610	145.210	-		
Haliburton	VE3GTS	147.720	147.120	+		
Hamilton	VE3DRW	144.890	145.490	-		
Hamilton	VE3DRW	223.360	224.960	-		
Hamilton	VE3MBR	147.705	147.105	+	A	
Hamilton	VE3NCF	146.160	146.760	-	E	
Hamilton	VE3RDM	449.750	444.750	+		
Hamilton	VE3RDX	449.075	444.075	+		
Hamilton	VE3RFI	448.250	443.250	+		
Hamilton	VE3ZOE	448.075	443.075	+		
Hamilton/Dundas	VE3RBH	449.425	444.425	+		
Hamilton/Dundas	VE3TTL	223.160	224.760	-		
Hamilton/Grimsby	VE3TVI	146.205	146.805	-	L	
Hamilton/Stoney Creek	VE3PDX	147.945	147.345	+		
Hamilton/Vineland	VE3VSC	449.650	444.650	+		
Huntsville/Dwight	VE3MUS	146.220	146.820	-		L31
Iroquois	VE3IRO	145.160	145.760	+		
Kenora	VE3LWR	146.430	147.030	-		
Kenora	VE3YQK	146.310	146.910	-	A	
Kidd Creek	VE3MZW	146.460	147.060	-		
Kingston	VE3KER	146.340	146.940	-	E	
Kingston	VE3KNR	146.190	146.790	-	A	
Kingsville	VE3ZZZ	144.650	145.250	-		
Kirkland Lake	VE3KLR	146.280	146.880	-	O	
Kitchener	VE3RBM	449.875	444.875	+		
Kitchener/Baden	VE3KSR	146.370	146.970	+		
Kitchener/Cambridge	VE3RCK	146.265	146.865	-	790	
Kitchener/Cambridge	VE3RKB	449.975	444.975	+		
Kitchener/Waterloo	VE3SOK <sup>ww</sup>	144.730	145.330	-	146 2335	
Kitchener/Waterloo	VE3WFM <sup>ww</sup>	147.690	147.090	+		
Leamington	VE3TOM	147.900	147.300	+		
Little Current	VE3RMI	147.280	147.880	-		
London	VE3LON	147.660	147.060	+		
London	VE3MCR	449.575	444.575	+		
London	VE3MGI	144.790	145.390	-	AL MR	
London	VE3MGI	449.800	444.800	+		
London	VE3NMN	448.200	443.200	+		
London	VE3RGM	144.850	145.450	-		
London	VE3SUE	449.400	444.400	+	AL MR	
London	VE3TTT	147.780	147.180	+	AELMR	
London	VE3TTT	223.180	224.780	-	AELMR	
London	VE3TTT	447.300	442.300	+		
London/Dorchester	VE3NDT	147.840	147.240	+		
London/Ingersoll	VE3OHR	147.870	147.270	+		
London/Lucan	VE3MCR	147.600	147.000	+		
London/St. Thomas	VE3STR	147.930	147.330	+		
Longlac	VE3LLT	146.460	147.060	-		
Manitick	VE3RIX	144.850	145.450	-		
Mattawa	VE3NFM	144.530	145.130	-	A	
Maynooth	VE3KBX	147.600	147.000	+		
Midland	VE3UGB	146.310	146.910	-		
Midland/Penetanguishene	VE3MGB	147.780	147.180	+		
Midland/Penetanguishene	VE3PEN	147.750	147.150	+	E	
Midland/Penetanguishene	VE3SGB	146.160	146.760	-	L	
Mississauga	VE3NSL	449.025	444.025	+		
Mississauga	VE3RCX	144.830	145.430	-		



Lc En	Location Emplacement	Call Sign Lettre d'appel	Input Entree	Output Sortie	Set Set	ST TY	R P
T1	Montreal River	VE3LSP	146.460	147.060	-		
T1	Moose Creek	VE3OJE	144.770	145.370	-		
T1	Morrisburg	VE3SVR	146.160	146.760	-		
Y1	North Bay	VE3NNZ	147.600	147.000	+	A	60
	Oakville	VE3OAK	147.615	147.015	+		
O1	Oakville	VE3OKV	448.150	443.150	+		
—	Orangeville	VE3GAR	449.500	444.500	+		
A1	Orillia	VE3ORR	147.810	147.210	+		
A1	Oshawa	VE3OSH	147.720	147.120	+		
B1	Owen Sound	VE3OSR	146.340	146.940	-		
B1	Owen Sound	VE3RAH	146.295	146.895	-		
B1	Pembroke	VE3NRR	146.160	146.760	-		
B1	Petawawa	VE3PTR	146.010	146.610	-	A	
B1	Peterborough	VE3KRA	223.340	224.940	-		
B1	Peterborough	VE3PBO	146.025	146.625	-		
B1	Pictou	VE3RAA	146.130	146.730	-	A	
B1	Port Colborne	VE3WCR	147.900	147.300	+		
B1	Port Elgin	VE3PER	146.220	146.820	-		
B1	Port Perry	VE3NAA	448.000	443.000	+		
B1	Renfrew	VE3STP	146.460	147.060	-		
B1	Renfrew	VE3STP	447.400	442.400	+		
E1	Sarnia	VE3RCA	223.360	224.960	-		
E1	Sarnia	VE3SUR	449.550	444.550	+		
E1	Sarnia/Petrolia	VE3SAR	144.770	145.370	-		
E1	Sault Ste Marie	VE3SAP	146.460	147.060	-	O	
E1	Sault Ste Marie	VE3SSM	146.340	146.940	-		
E1	Sault Ste Marie	VE3YAK	147.750	147.150	+	A	
E1	Shelburne	VE3RAP	449.925	444.925	+		L31-2
E1	Shelburne	VE3ZAP	146.085	146.685	-		L31-2
E1	Simcoe	VE3SME	146.325	146.925	-		
E1	Sioux Narrows	VE3RSN	146.340	146.940	-		
E1	Smith Falls	VE3RLR	147.810	147.210	+	O	
(1	South River	VE3SRO	147.900	147.300	+		
(1	St. Catherines	VE3NRS	147.840	147.240	+		
(1	St. Joseph Island	VE3SJI	146.280	146.880	-	B	
(1	Stratford	VE3RFC	144.750	145.350	-		
(1	Sudbury	VE3JPF	146.100	146.700	-		
(1	Sudbury	VE3SRB	146.460	147.060	-		
(1	Temagami	VE3TEM	146.310	146.910	-		
(1	Thorold	VE3EUP	449.525	444.525	+		
(1	Thorold	VE3HM	447.250	442.250	+		
(1	Thorold	VE3PLF	449.725	444.725	+		
(1	Thorold	VE3RAF	144.590	145.190	-		
(1	Thunder Bay	VE3TBR	146.220	146.820	-	AB	
(1	Thunder Bay	VE3YQT	146.460	147.060	-		
(1	Timmins	VE3TIR	146.460	147.060	-	A	60
(1	Tiverton	VE3TIV	146.010	146.610	-		
(1	Tobermory	VE3ROT	146.130	146.730	-		
(1	Toronto	VE3GER	144.770	145.370	-		L32
(1	Toronto	VE3MHZ	146.055	146.655	-		
(1	Toronto	VE3MLZ	449.200	444.200	+		
(1	Toronto	VE3MOT	147.780	147.180	+		
(1	Toronto	VE3NOR	448.650	443.650	+		
(1	Toronto	VE3PRT	448.300	443.300	+		
(1	Toronto	VE3PVT	448.500	443.500	+		
(1	Toronto	VE3RAK	449.325	444.325	+		
(1	Toronto	VE3RAL	223.180	224.780	-		
(1	Toronto	VE3REC	448.350	443.350	+		

Location Emplacement	Call Sign Lettre d'appel	Input Entree	Output Set Sortie Set	ST TY	R P
Toronto	VE3RHR	448.900	443.900	+	
Toronto	VE3RTC	448.825	443.825	+	
Toronto	VE3RTP	448.325	443.325	+	
Toronto	VE3TNC	147.870	147.270	+	
Toronto	VE3TOR	146.340	146.940	-	
Toronto	VE3TRO	144.530	145.130	-	A
Toronto	VE3TTR	223.380	224.980	-	A L32
Toronto	VE3TTY	146.100	146.700	-	A
Toronto	VE3TWR	144.810	145.410	-	AEZL31
Toronto	VE3TWR	449.400	444.400	+	AEZL31
Toronto	VE3UKW	223.240	224.840	-	
Toronto	VE3UKW	449.850	444.850	+	
Toronto	VE3WHO	144.750	145.350	-	L31
Toronto	VE3WHU	449.775	444.775	+	
Toronto	VE3XUU	144.630	145.230	-	
Toronto	VE3YYZ	448.050	443.050	+	
Toronto/Acton	VE3RSS	147.630	147.030	+	
Toronto/Agincourt	VE3AYC	144.650	145.250	-	A
Toronto/Agincourt	VE3WOO	29.540	29.640	-	
Toronto/Agincourt	VE3WOO	144.510	145.110	-	
Toronto/Aurora	VE3YRC	147.825	147.225	+	
Toronto/Aurora Ridge	VE3UHR	449.250	444.250	+	L32H
Toronto/Aurora Ridge	VE3ULR	144.870	145.470	-	L32
Toronto/Aurora Ridge	VE3ULR	223.380	224.880	-	A L32
Toronto/Aurora Ridge	VE3ULR	447.025	442.025	+	L32H
Toronto/Caledon	VE3SKY	146.385	146.985	-	
Toronto/Etobicoke	VE3SKI	448.100	443.100	+	
Toronto/Goodwood	VE3TFM	29.520	29.620	-	AZ L31
Toronto/King City	VE3RKT	449.300	444.300	+	
Toronto/Milton	VE3CUB	449.125	444.125	+	
Toronto/Milton	VE3ERX	147.855	147.255	+	
Toronto/Pickering	VE3SPA	147.975	147.375	+	
Toronto/Pickering	VE3SPA	449.600	444.600	+	
Toronto/Stouffville	VE3TDX	147.930	147.330	+	
Toronto/Uxbridge	VE3GUM	449.175	444.175	+	
Toronto/Uxbridge	VE3PIC	146.070	146.670	-	
Toronto/Uxbridge	VE3RPT	147.660	147.060	+	AEZL31
Toronto/Uxbridge	VE3RPT	447.100	442.100	+	AEZL31
Toronto/Uxbridge	VE3SIX	52.030	53.030	-	AEZL31
Trenton	VE3TRN	147.615	147.015	+	
Waterloo	VE3WWW	146.235	146.835	-	
Wawa	VE3WAW	146.340	146.940	-	O
Welland	VE3OYN	448.400	443.400	+	
Windsor	VE3III	147.660	147.060	+	AE
Windsor	VE3III	449.500	444.500	+	
Windsor	VE3OOO	223.060	224.660	-	
Windsor	VE3RRR	449.300	444.300	+	
Windsor	VE3UUU	449.400	444.400	+	
Windsor	VE3WIN	147.600	147.000	+	
Windsor/McGregor	VE3SOT	144.790	145.390	-	

## Ottawa-Hull

Ottawa	VE3FXE	147.870	147.270	+	
Ottawa/Hull	VE2CRA	146.340	146.940	-	100
Ottawa/Hull	VE2CRA	448.300	443.300	+	O
Ottawa/Hull	VE2KPG	147.960	147.360	+	A
Ottawa/Hull	VE2RAO	146.100	146.700	-	L

Location Emplacement	Call Sign Lettre d'appel	Input Entree	Output Sortie	Set Set	ST TY	R P
Montreal River	VE3LSP	146.460	147.060	-		
Moose Creek	VE3OJE	144.770	145.370	-		
Morrisburg	VE3SVR	146.160	146.760	-		
North Bay	VE3NNZ	147.600	147.000	+	A	60
Oakville	VE3OAK	147.615	147.015	+		
Oakville	VE3OKV	448.150	443.150	+		
Orangeville	VE3GAR	449.500	444.500	+		
Orillia	VE3ORR	147.810	147.210	+		
Oshawa	VE3OSH	147.720	147.120	+		
Owen Sound	VE3OSR	146.340	146.940	-		
Owen Sound	VE3RAH	146.295	146.895	-		
Pembroke	VE3NRR	146.160	146.760	-		
Petawawa	VE3PTR	146.010	146.610	-	A	
Peterborough	VE3KRA	223.340	224.940	-		
Peterborough	VE3PBO	146.025	146.625	-		
Picton	VE3RAA	146.130	146.730	-	A	
Port Colborne	VE3WCR	147.900	147.300	+		
Port Elgin	VE3PER	146.220	146.820	-		
Port Perry	VE3NAA	448.000	443.000	+		
Renfrew	VE3STP	146.460	147.060	-		
Renfrew	VE3STP	447.400	442.400	+		
Sarnia	VE3RCA	223.360	224.960	-		
Sarnia	VE3SUR	449.550	444.550	+		
Sarnia/Petrolia	VE3SAR	144.770	145.370	-		
Sault Ste Marie	VE3SAP	146.460	147.060	-	O	
Sault Ste Marie	VE3SSM	146.340	146.940	-		
Sault Ste Marie	VE3YAK	147.750	147.150	+	A	
Shelburne	VE3RAP	449.925	444.925	+		L31-2
Shelburne	VE3ZAP	146.085	146.685	-		L31-2
Simcoe	VE3SME	146.325	146.925	-		
Sioux Narrows	VE3RSN	146.340	146.940	-		
Smith Falls	VE3RLR	147.810	147.210	+	O	
South River	VE3SRO	147.900	147.300	+		
St. Catharines	VE3NRS	147.840	147.240	+		
St. Joseph Island	VE3SJI	146.280	146.880	-	B	
Stratford	VE3RFC	144.750	145.350	-		
Sudbury	VE3JPF	146.100	146.700	-		
Sudbury	VE3SRB	146.460	147.060	-		
Temagami	VE3TEM	146.310	146.910	-		
Thorold	VE3EUP	449.525	444.525	+		
Thorold	VE3HM	447.250	442.250	+		
Thorold	VE3PLF	449.725	444.725	+		
Thorold	VE3RAF	144.590	145.190	-		
Thunder Bay	VE3TBR	146.220	146.820	-	AB	
Thunder Bay	VE3YQT	146.460	147.060	-		
Timmins	VE3TIR	146.460	147.060	-	A	60
Tiverton	VE3TIV	146.010	146.610	-		
Tobermory	VE3ROT	146.130	146.730	-		
Toronto	VE3GER	144.770	145.370	-		L32
Toronto	VE3MHZ	146.055	146.655	-		
Toronto	VE3MLZ	449.200	444.200	+		
Toronto	VE3MOT	147.780	147.180	+		
Toronto	VE3NOR	448.650	443.650	+		
Toronto	VE3PRT	448.300	443.300	+		
Toronto	VE3PVT	448.500	443.500	+		
Toronto	VE3RAK	449.325	444.325	+		
Toronto	VE3RAL	223.180	224.780	-		
Toronto	VE3REC	448.350	443.350	+		

Location Emplacement	Call Sign Lettre d'appel	Input Entree	Output Sortie	Set Set	ST TY	R P
Toronto	VE3RHR	448.900	443.900	+		
Toronto	VE3RTC	448.825	443.825	+		
Toronto	VE3RTP	448.325	443.325	+		
Toronto	VE3TNC	147.870	147.270	+		
Toronto	VE3TOR	146.340	146.940	-		
Toronto	VE3TRO	144.530	145.130	-	A	
Toronto	VE3TTR	223.380	224.980	-	A	L32
Toronto	VE3TTY	146.100	146.700	-	A	
Toronto	VE3TWR	144.810	145.410	-	AEZL31	
Toronto	VE3TWR	449.400	444.400	+	AEZL31	
Toronto	VE3UKW	223.240	224.840	-		
Toronto	VE3UKW	449.850	444.850	+		
Toronto	VE3WHO	144.750	145.350	-		L31
Toronto	VE3WHU	449.775	444.775	+		
Toronto	VE3XUU	144.630	145.230	-		
Toronto	VE3YYZ	448.050	443.050	+		
Toronto/Acton	VE3RSS	147.630	147.030	+		
Toronto/Agincourt	VE3AYC	144.650	145.250	-	A	
Toronto/Agincourt	VE3WOO	29.540	29.640	-		
Toronto/Agincourt	VE3WOO	144.510	145.110	-		
Toronto/Aurora	VE3YRC	147.825	147.225	+		
Toronto/Aurora Ridge	VE3UHR	449.250	444.250	+		L32H
Toronto/Aurora Ridge	VE3ULR	144.870	145.470	-		L32
Toronto/Aurora Ridge	VE3ULR	223.380	224.880	-	A	L32
Toronto/Aurora Ridge	VE3ULR	447.025	442.025	+		L32H
Toronto/Caledon	VE3SKY	146.385	146.985	-		
Toronto/Etobicoke	VE3SKI	448.100	443.100	+		
Toronto/Goodwood	VE3TFM	29.520	29.620	-	AZ	L31
Toronto/King City	VE3RKT	449.300	444.300	+		
Toronto/Milton	VE3CUB	449.125	444.125	+		
Toronto/Milton	VE3ERX	147.855	147.255	+		
Toronto/Pickering	VE3SPA	147.975	147.375	+		
Toronto/Pickering	VE3SPA	449.600	444.600	+		
Toronto/Stouffville	VE3TDX	147.930	147.330	+		
Toronto/Uxbridge	VE3GUM	449.175	444.175	+		
Toronto/Uxbridge	VE3PIC	146.070	146.670	-		
Toronto/Uxbridge	VE3RPT	147.660	147.060	+	AEZL31	
Toronto/Uxbridge	VE3RPT	447.100	442.100	+	AEZL31	
Toronto/Uxbridge	VE3SIX	52.030	53.030	-	AEZL31	
Trenton	VE3TRN	147.615	147.015	+		
Waterloo	VE3WWW	146.235	146.835	-		
Wawa	VE3WAW	146.340	146.940	-	O	
Welland	VE3OYN	448.400	443.400	+		
Windsor	VE3III	147.660	147.060	+	AE	
Windsor	VE3III	449.500	444.500	+		
Windsor	VE3000	223.060	224.660	-		
Windsor	VE3RRR	449.300	444.300	+		
Windsor	VE3UUU	449.400	444.400	+		
Windsor	VE3WIN	147.600	147.000	+		
Windsor/McGregor	VE3SOT	144.790	145.390	-		
<b>Ottawa-Hull</b>						
Ottawa	VE3FXE	147.870	147.270	+		
Ottawa/Hull	VE2CRA	146.340	146.940	-		100
Ottawa/Hull	VE2CRA	448.300	443.300	+	O	
Ottawa/Hull	VE2KPG	147.960	147.360	+	A	
Ottawa/Hull	VE2RAO	146.100	146.700	-	L	

Location Emplacement	Call Sign Lettre d'appel	Input Entree	Output Sortie	Set Set	ST TY	R P
Ottawa/Hull	VE3MPC	147.750	147.150	+		
Ottawa/Hull	VE3OCR	223.340	224.940	-		45
Ottawa/Hull	VE3ORA	146.280	146.880	-		
Ottawa/Hull	VE3RST	146.010	146.610	-	A	
Ottawa/Hull	VE3TEL	146.430	147.030	-		
Ottawa/Hull	VE3TEL	222.340	223.940	-		
Ottawa/Hull	VE3TWO	147.900	147.300	+		
Ottawa/Hull	VE3URC	147.720	147.120	+		
Ottawa/Hull	VE3XDX	144.510	145.110	-		

### Prince Edward Island-Ile du Prince Edward

Charlottetown	VE1AHC	448.300	443.300	+	AEL	
Charlottetown	VE1CRA	146.070	146.670	-	AEL	
Charlottetown	VE1CRA	444.100	449.100	+	EL	
Charlottetown	VE1HI	146.340	146.940	-	AE	
Charlottetown	VE1UHF	449.400	444.400	+	AEL	
O'Leary	VE1ATN	147.720	147.120	+	E	
Summerside	VE1CFR	146.250	146.850	-	AE	

### Quebec-Quebec

Alma	VE2RCA	146.070	146.670	-	A	
Alma	VE2RCR	146.340	146.940	-	EL	
Amos	VE2RIC	146.340	146.940	-		
Amos	VE2RYE	146.100	146.700	-		
Amqui	VE2RKH	146.160	146.760	-		
Bagotville (CFB)	VE2RYB	146.040	146.640	-		
Baie St. Paul	VE2RAT	146.310	146.910	-	A	
Blainville	VE2RMR	145.450	144.850	+		
Brownsburg	VE2RWC	146.205	146.805	-		LR
Cap de la Madeleine	VE2RDG	147.855	147.255	+		
Cap de la Madeleine	VE2ROG	448.000	443.000	+		
Carleton	VE2RIN	146.220	146.820	-		
Carleton	VE2RXT	146.460	147.060	-		L21
Chicoutimi	VE2RCC	147.720	147.120	+	OL	
Chicoutimi	VE2RES	146.280	146.880	-	L	
Chicoutimi	VE2RIT	146.250	146.850	-		
Chicoutimi	VE2RIU	146.160	146.760	-		
Coaticook	VE2RDM	147.960	147.360	+	E	
Covey Hill	VE2RTS	444.500	449.500	-	R	MR
Dolbeau	VE2RCD	146.100	146.700	-	AL	
Donacona	VE2RAP	147.810	147.210	-	A	
Drummondville	VE2RDL	146.025	146.625	-	A	
Drummondville	VE2RDV	147.690	147.090	+		
Gagnon	VE2RGA	146.340	146.940	-		
Gaspé	VE2RLE	146.280	146.880	-	P	L21
Granby	VE2RTA	147.780	147.180	+	AE	
Granby	VE2RVM	144.610	145.210	-		
Grande Anse	VE2RTL	146.400	147.000	-		
Grande Mere	VE2RGM	146.310	146.910	-	AB	
Haute Rive	VE2RJG	147.900	147.300	+		L21
Joliette	VE2RMA	146.430	147.030	-		L21
Joliette	VE2RMS	444.700	449.700	+	A	
Jonquiere	VE2RFL	444.100	449.100	-		
Jonquiere	VE2VP	146.220	146.820	-		
La Malbaie	VE2CTT	146.400	147.000	-	A	
La Pocatiere	VE2RAF	147.810	147.210	+		

Location Emplacement	Call Sign Lettre d'appel	Input Entree	Output Sortie	Set Set	ST TY	R P
La Sarre	VE2RRL	146.100	146.700	-		
La Tuque	VE2RTL	146.190	146.790	-	A	L21
Matane	VE2RAS	147.720	147.120	+	AE	
Megantic	VE2FX	147.930	147.330	+	L	
Mont Joli	VE2RAC	146.130	146.730	-	E	L21
Mont Joli	VE2RMJ	147.780	147.180	+	A	
Mont Laurier	VE2RMC	146.370	146.970	-	E	L21LR
Montmagny	VE2RAB	146.370	146.970	-		
Montmagny	VE2RQM	147.870	147.270	+	A	
Montreal	VE2AIF	444.300	449.300	-	A	LOC
Montreal	VE2BG	146.460	147.060	-		MR
Montreal	VE2CWI	146.310	146.910	-	B	SR
Montreal	VE2MRC	147.720	146.120	+		
Montreal	VE2QO	147.630	147.030	+		
Montreal	VE2RBD	444.600	449.600	-		
Montreal	VE2RBP	147.375	147.975	-		
Montreal	VE2RED	147.870	147.270	+	AE	MR
Montreal	VE2REL	147.315	147.915	-	A	
Montreal	VE2REM	144.750	145.350	-		
Montreal	VE2REM	144.850	145.450	-		
Montreal	VE2REP	146.280	146.880	-		SR
Montreal	VE2REX	146.085	146.685	-	BEL	
Montreal	VE2RHH	223.300	224.900	-	ELZ	
Montreal	VE2RHH	443.700	448.700	-	ELZ	
Montreal	VE2RHH	908.000	920.000	-	ELZ	
Montreal	VE2RJS	444.950	449.950	-	A	
Montreal	VE2RKO	146.040	146.640	-	A	MR
Montreal	VE2RSM	144.510	145.110	-		
Montreal	VE2RST	144.530	145.130	-		
Montreal	VE2RTV	436.000	445.800	*	V	SR
Montreal	VE2RVS	146.250	146.850	-	R	SR
Montreal (Dorval)	VE2RBI	147.975	147.375	+		SR
Montreal (Mt. Bruno)	VE2RMB	146.100	146.700	-	E	MR
Montreal (St. Jerome)	VE2RMP	146.160	146.760	-		MR
Montreal/Rigaud	VE2RM	146.400	147.000	-	AE	LR
Montreal/Rigaud	VE2RM	223.380	224.980	-	EL	
Montreal/Rigaud	VE2RM	444.000	449.000	-	E	LR
Murdochville	VE2RAE	147.660	147.060	+		
Parc Chibaugameau	VE2RTG	146.430	147.030	-		
Parc Laurentides	VE2RJZ	147.810	147.210	+		
Parc des Laurentides	VE2RAH	53.135	53.635	-		
Parc des Laurentides	VE2RMG	147.690	147.090	+	E	L21
Perce	VE2RLC	146.190	146.790	-	P	L21
Plessisville	VE2CRP	146.130	146.730	-		
Quebec	VE2RQR	146.010	146.610	-	A	
Quebec	VE2RQT	434.000	1278.750	-	V	
Quebec	VE2RVD	146.160	146.760	-		
Quebec Cite	VE2DB	146.280	146.880	-		
Quebec Cite	VE2OM	146.340	146.940	-		
Quebec Cite	VE2RAA	147.960	147.360	+	L	
Quebec Cite	VE2RAR	147.015	147.615	-	A	
Quebec Cite	VE2RCQ	147.900	147.300	+	AE	
Quebec Cite	VE2RCQ	449.000	444.000	+		
Quebec Cite	VE2RQT	438.500	1283.250	-		ASC
Quebec Cite	VE2SRC	147.720	147.120	+	A	
Quebec Cite	VE2UX	146.220	146.820	-	E	L21LR
Quebec Cite/Lauzon	VE2RQC	449.400	444.400	+	A	
Rimouski	VE2CSL	146.340	146.940	-	AE	

Location Emplacement	Call Sign Lettre d'appel	Input Entree	Output Sortie	Set Set	ST TY	R P
Rimouski	VE2ROE	146.250	146.850	-		
Rimouski	VE2RWM	146.010	146.610	-		L21
Rimouski	VE2RXA	147.840	147.240	+		
Rimouski	VE2RXA	442.400	447.400	-		
Rimouski	VE2RXB	147.930	147.330	+		
Ripon	VE2RBA	147.945	147.345	+		
Riviere du Loup	VE2NY	147.660	147.060	+	E	L21
Riviere du Loup	VE2RAY	147.750	147.150	+	A	
Riviere du Loup	VE2ROO	146.190	146.790	-		
Rouyn/Noranda	VE2RON	146.220	146.820	-	AP	L21
Sept Isles	VE2RSI	146.340	146.940	-		L21
Sept Isles (Baie Trinity)	VE2RRU	146.190	146.790	-		L21
Sherbrooke	VE2RCL	144.570	145.170	-		
Sherbrooke	VE2RKL	448.000	443.000	+		
Sherbrooke	VE2RSH	146.370	146.970	-		
Sherbrooke	VE2TA	144.590	145.190	-	L	
Sherbrooke (Mt. Orford)	VE2TA	147.990	146.390	+		
Sorel Tracy	VE2RBS	146.010	146.610	-	A	MR
St Gabriel	VE2RGC	147.900	147.300	+		
St. Chrysostome	VE2RHQ	146.220	146.820	-		
St. Felicien	VE2RSF	146.010	146.610	-	A	
St. Gabriel	VE2RAK	146.100	146.700	-		
St. Georges	VE2RSG	146.040	146.640	-	A	
St. Hyacinthe	VE2RBE	147.355	147.955	-	A	
St. Jean	VE2RVR	147.840	147.240	+		
St. Joseph de Beauce	VE2RMF	147.990	147.390	+	P	L21
St. Joseph du Lac	VE2RST	444.900	449.900	-		
St. Martine (Montreal)	VE2REC	147.945	147.345	+		MR
St. Raymond	VE2RAZ	147.840	147.240	+		
St. Tite Des Caps	VE2RCB	144.870	145.470	-		
Temiscaming	VE2RTE	146.130	146.730	-	A	
Trois Rivieres	VE2CTR	146.460	147.060	-	A	
Trois Rivieres	VE2RKL	144.730	145.330	-		
Trois Rivieres	VE2RTR	146.070	146.670	-	A	
Trois Rivieres	VE2RZX	147.790	147.190	+	AR	
Victoriaville	VE2RBF	147.750	147.150	+		
Victoriaville	VE2RMD	144.650	145.250	-		
Victoriaville	VE2RMD	441.000	446.000	-		

### Saskatchewan-Saskatchewan

Anglin Lake	VE5BBI	146.160	146.760	-		
Duval (Last Mountain)	VE5AT	146.250	146.850	-	B	
Estavan	VE5EST	147.780	147.180	+		
Grenfell	VE5GRP	146.070	146.670	-		
Grenfell	VE5GRP	224.300	222.700	+		
Ituna	VE5ABO	146.310	146.910	-		
Janzen	VE5HVR	146.220	146.820	-	L	
Lloydminster	VE5RI	146.340	146.940	-		
Melfort	VE5RPT	146.280	146.880	-		
Moose Jaw	VE5CI	146.340	146.940	-		65
Moose Jaw	VE5VHF	146.160	146.760	-		
Moose Mountain	VE5MMR	146.220	146.820	-		
Moosomin	VE5MRC	146.160	146.760	-		
North Battleford	VE5BRC	146.280	146.880	-		
Prince Albert	VE5EEE	146.460	147.060	-	A	
Regina	VE5ATV	439.250	1253.000	-	V	
Regina	VE5KE	146.460	147.060	-		

Location Emplacement	Call Sign Lettre d'appel	Input Entree	Output Set Sortie Set	ST TY	R P
Regina	VE5RRG	147.720	147.120 +	A	
Regina	VE5SS	146.280	146.880 -	A	
Regina	VE5UHF	449.000	444.000 +		
Rock Point	VE5XW	146.130	146.730 -		
Saskatoon	VE5SCA	146.370	146.970 -	A	
Saskatoon	VE5SK	146.040	146.640 -		
Sonningdale	VE5SON	146.010	146.610 -		
Swift Current	VE5SCR	146.280	146.880 -		
Tomkins	VE5TOM	146.070	146.670 -		
Weyburn	VE5WEY	146.100	146.700 -		
Wolseley	VE5ACB	222.700	224.300 -	EL	
Yellowhead	VE5ESK	146.160	146.760 -		
Yorktown	VE5RF	146.280	146.880 -	CLQ	

**Yukon/Northwest Territories-Youkon/Territoires du nord-ouest**

Fort Smith	VE8RDP	144.570	145.170 -		80
Haines Junction	VY1RHJ	146.160	146.760 -		
Hay River	VE8HR	146.700	146.100 -	A	
Hn. Piteau	VE8FOX	144.590			



CARF Repeater Directory Notes

Notes du repertoire des repetitrices de FRAC

Autopatch	A	Repercussion automatique
Battery powered	B	Pouvoir d'accumulateur
Temporary call	C	Appel temporaire
Packet radio-data	D	Communication radio-data
Emergency power	E	Pouvoir d'urgence
Linked(see below)	L	Relie (voir dessous)
Temporarily off the air	O	Temporairement hors d'antenne
Proposed	P	Proposee
Temporary Location	Q	Emplacement temporaire
RTTY/FAX	R	RTTY/FAX
ATV video Carrier	V	ATV on porteuse video

Linked

Relie

[L]inked in call area (1) system (1)	L11	Relie dans region (1) systeme (1)
[L]inked in call area (3) system (3) (HUB)	L33H	Relie dans region (3) systeme (3)
[L]inked in call area (6) system (2)	L62	Relie dans region (6) system (2)
Audio subcarrier for ATV	ASC	Audio sous-porteuse pour ATV

Range (in kilometres)  
Portee (en kilometres)

Local coverage	LOC	Rayonnement locale
Short range (25km)	SR	Rayonnement court (25 km)
Medium range (70km)	MR	Rayonnement medium (70 km)
Long Range (70+ km)	LR	Rayonnement long (70+ km)
Directed range (beamed to a specific area)	DR	Portee guidee (dirige dans une region specifique)